

Cost of living

Borough and ward map data pack

Camden Town

December 2022



Purpose of this Deck

- The data and maps in this deck have been prepared to help frame conversations at a local ward level between Ward Members and local representatives of VCS and other services.
- These conversations are about pooling intelligence for local areas about the impact of the cost of living crisis so far and future risks that might exist given the situation in each local area.
- This data pack brings together some key contextual information currently available e.g. levels of fuel poverty, benefits uptake, energy efficiency – to help provide some sense of possible priorities for intervention at a local level, expanding or enhancing work happening across the borough.
- The cost of living response programme is ongoing and interventions are emerging across a range of workstreams – data developed to inform the work, or as a result of the work, may help expand on this dataset in future.
- Due to the ward changes that came into effect in May 2022, a range of key external and internal data sources are not aligned to our new political geography, so we have taken an approach aimed to work around this constraint (i.e. much more reliance of borough-level mapping with new wards overlaid).

Overview

Individual ward summary – mapping the ward in more detail, and providing overview of key data

Camden data – mapped data across a range of measures to illustrate overall picture in Camden in comparison to individual wards

Contents

Ward focus

[Ward map with local infrastructure identified](#)

List of schools, planned warm places and food provision

[Key ward data](#)

Population, cost of living awards, rent arrears, food poverty, energy efficiency

Borough-level information

[Population overview](#)

Fuel poverty

[ONS sub-regional fuel poverty statistics \(2020, LSOA\)](#)

[Low income family tracker fuel poverty map](#)

[Energy efficiency certificate data – map and ward table](#)

[Local planned warm banks locations](#)

Food poverty

[Low Income Family Tracker data map](#)

[Low Income Family Tracker data chart by ward](#)

[Local food sources](#)

Financial resilience

[CACI equivalised household income paycheck data \(2022, LSOA\)](#)

[DWP claimant count \(unemployment\) data](#) (September 2022, LSOA)

[DWP income support](#) (February 2022, LSOA)

[DWP Universal Credit](#) (February 2022, LSOA)

[DWP pension credit](#) (February 2022, LSOA)

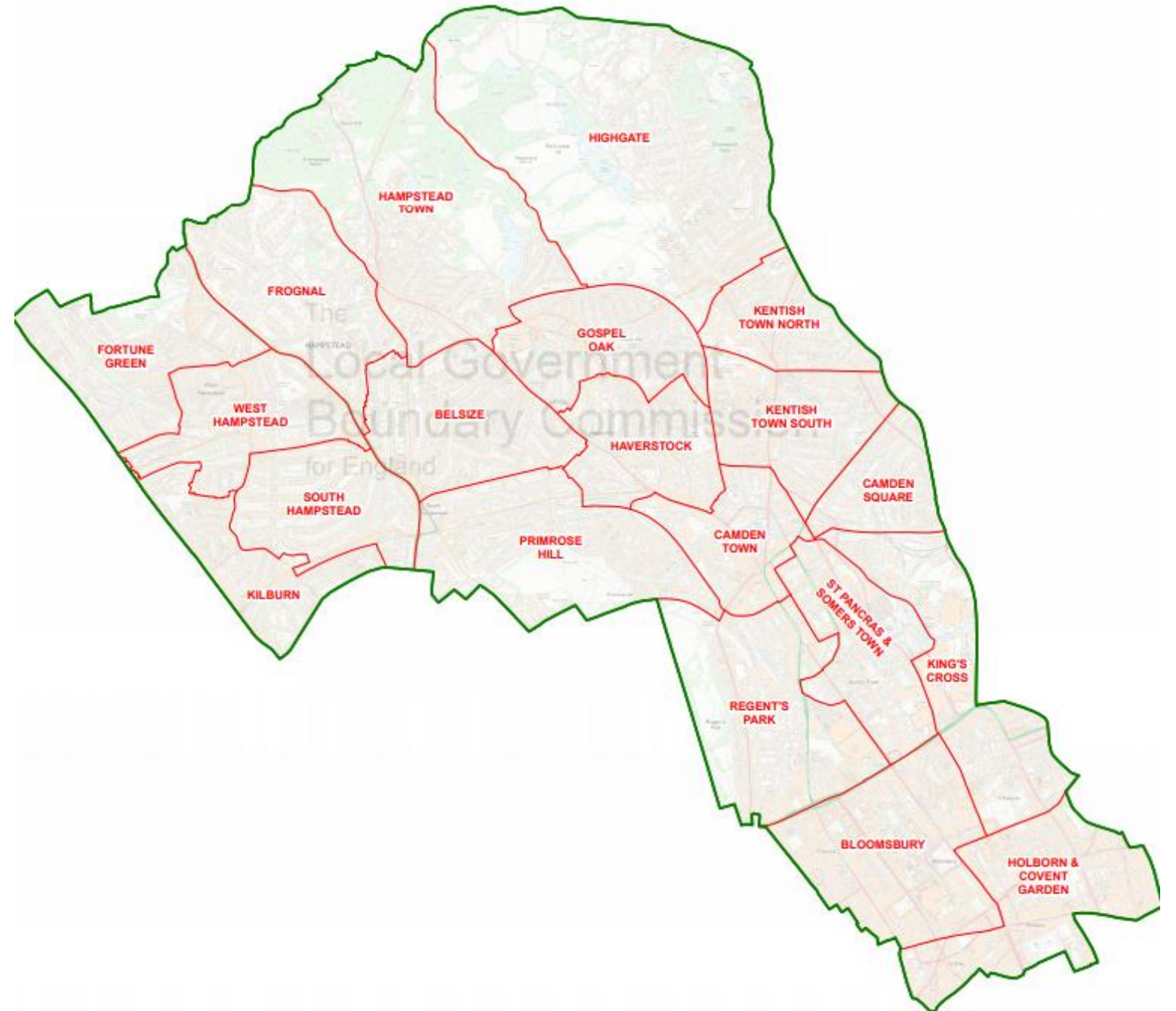
[Rent arrears over £100 – ward table](#)

[Cost of living awards – ward table](#)

[Data glossary](#)

Ward overview

- The Local Government Boundary Commission for England reviewed the electoral arrangements in Camden between 2018 and 2020.
- It was initiated as a periodic review of Camden's ward boundaries, as it has been 19 years since they were last reviewed.
- Camden now has 55 councillors, one more than previously, and 20 wards, two more than previously.
- The boundaries of all wards changed, with the exception of Regent's Park.
- These boundary changes mean that existing data based on statistical geographies do not precisely align to new wards.



Camden Town

Schools in ward and % of children eligible for Free School Meals

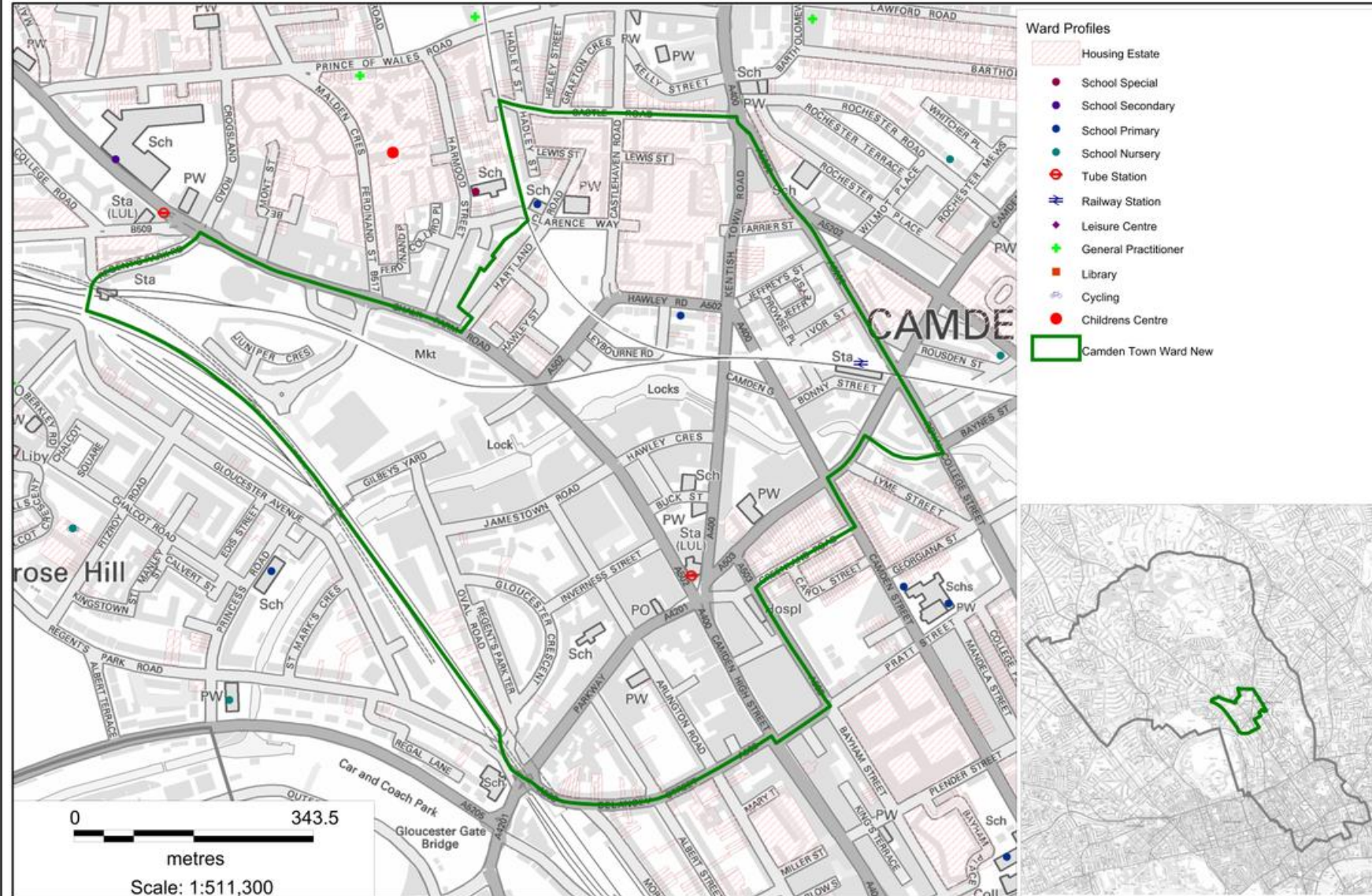
- Hawley Primary (Primary) 39.4%
- Holy Trinity & St Silas (Primary) 32.7%
- Camden average - 40%

Warm places in ward

- None identified

Food providers in ward

- None identified



Camden Town



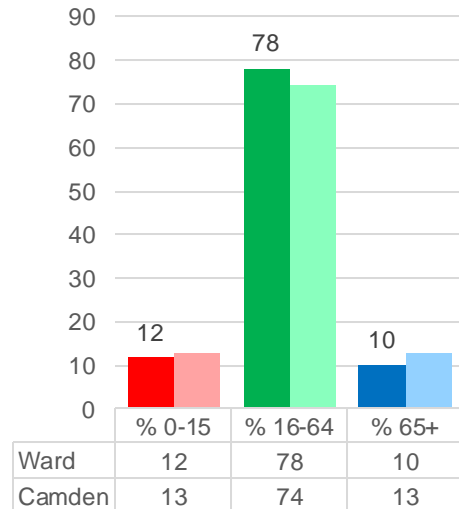
Print Date: 02/04/2020

Printed By: L.Small

Map Ref No: c09426

Camden Town

Population



Camden Town has 8,226 residents, and a larger proportion are working age compared to Camden as a whole. [Link to slide.](#)

Population	Ward	Camden
Total	8,226	274,795

Fuel poverty

Low Income Family Tracker data suggests there are some **higher concentrations of fuel poverty** in certain areas within the ward. [Link to slide.](#)

Energy efficiency

Camden Town is above average in relation to energy efficiency of properties, with only 39% band D-G based on energy certificate performance, compared to 52% in Camden. [Link to slide.](#)

Food poverty

Low Income Family Tracker data suggests there are 234 households experience food poverty in Camden Town, this is the 12th highest (out of 20) number of households experiencing food poverty in Camden wards based on this data. [Link to slide.](#)

Unemployment and benefits

There are higher concentrations of individuals receiving unemployment benefits, including income support and universal credit, in the ward. [Link to slide.](#)

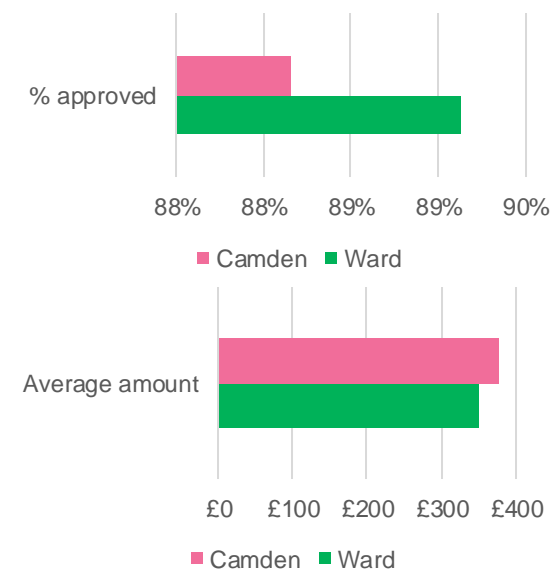
Tenancies in arrears

Over 214 tenancies are in rent arrears over £100 in the ward. This is the 15th highest number in Camden wards, but it should be noted that it is dependent on the location of Camden properties. [Link to slide.](#)

Tenancies in arrears >£100	Ward	% of Camden	Camden total
No. households	214	2.7%	8031
Ranking (out of 20)	15		

CoL crisis fund

As of 30th November, there have been 53 applications so far for cost of living crisis fund support from residents of Camden Town. 89% have been approved, with an average amount of £351 being awarded. [Link to slide.](#)

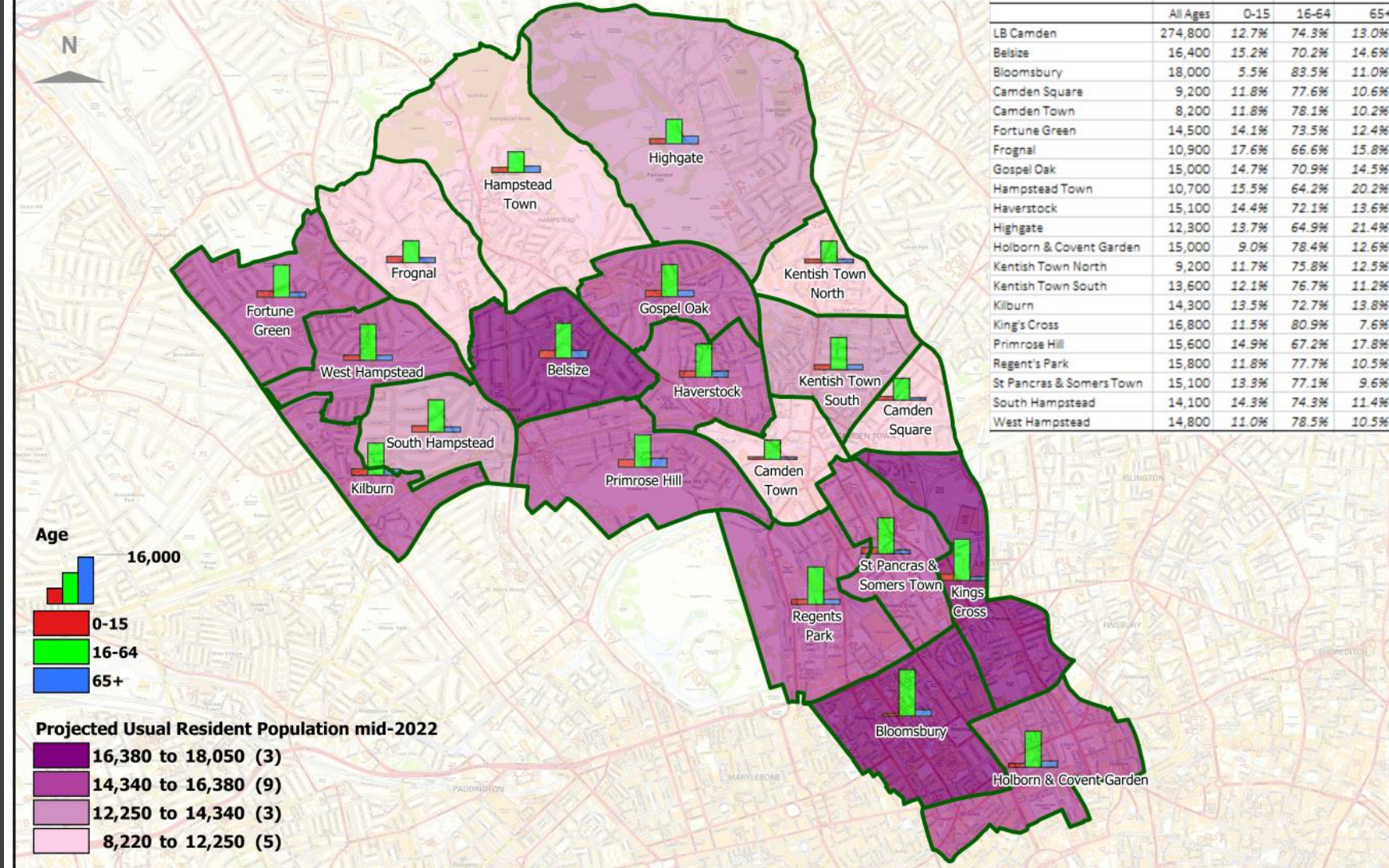


COL Awards	Ward	Ward as % of Camden	Camden
Applications	53	3.2%	1634
Approvals	46	3.3%	1393
% approved	89%		88%
Average amount	£351		£377

Population overview

- Data based on Greater London Authority 2020-based ward population projections for mid-2022.
- More detailed data based on 2021 Census is expected to be released by Office for National Statistics in Spring 2023, which will include:
 - Demographic details: sex, age, marital status, residence type & household composition
 - Ethnicity, national identity, religion, country of birth, language
 - Health data such as general health, long term health problem or disability, provision of unpaid care
 - Housing data on household size, tenure, accommodation type
 - Education data: in full time education, highest qualification
 - Labour market information: economic activity, hours worked, industry, occupation

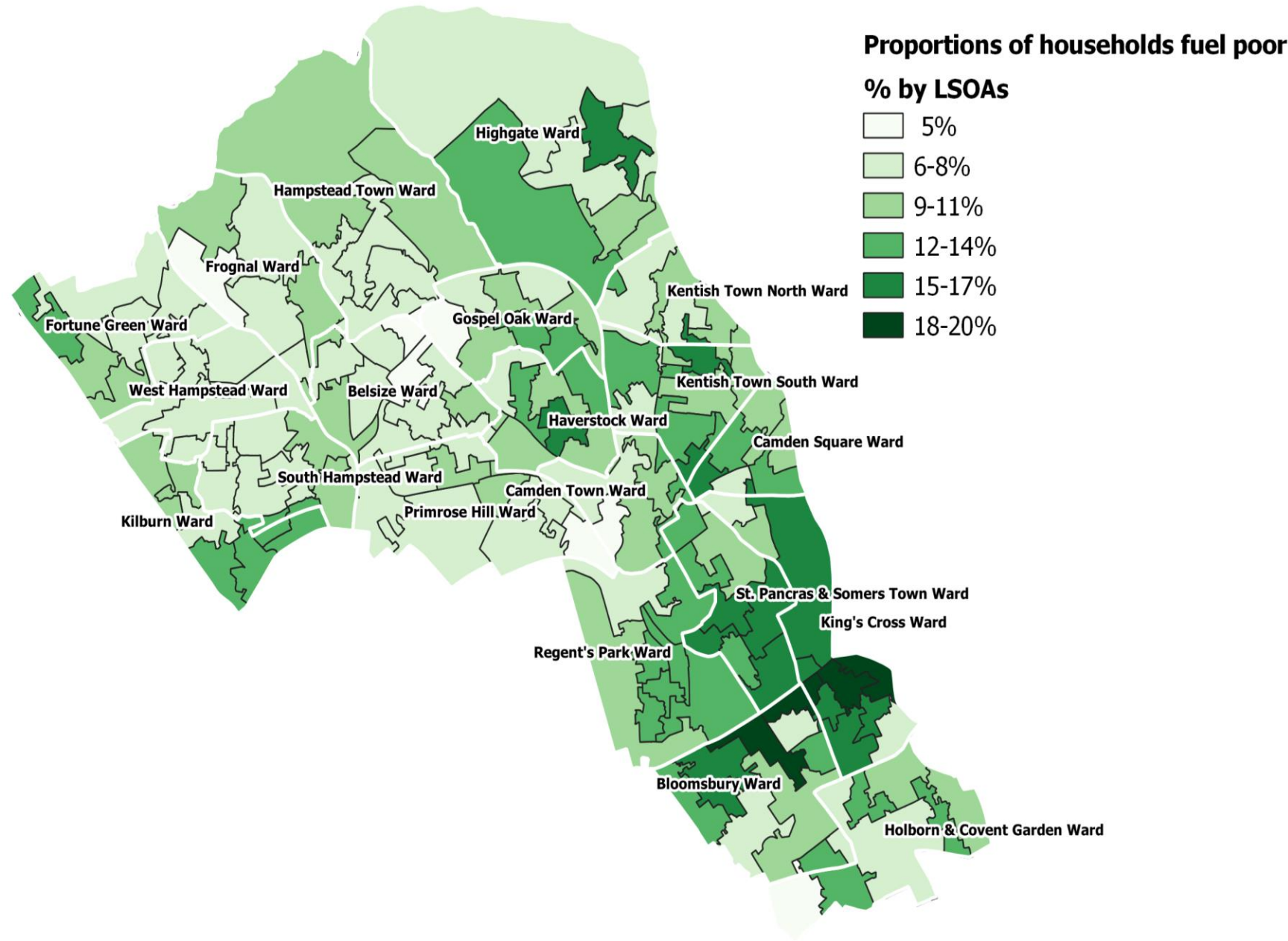
GLA 2020-based Ward Population Projections at mid-2022, with Wide Age Group Charts (#)



Data source: GLA 2020-based Projections 'Camden Development, Migration Scenario 2', © GLA, 2022. Usual resident population. Note. Does not include data from the 2021 Census. Boundaries: This map is based upon Ordnance Survey material with the permission of Ordnance Survey on behalf of the Controller of Her Majesty's Stationery Office ©. Unauthorised reproduction infringes Crown copyright and may lead to prosecution or civil proceedings. Licence No. 100019726. Year: 2022; 2011 Census Statistical Boundaries, © ONS, Crown Copyright. Produced by: Strategy Family, LB Camden (contact 020 7974 5561 or email: population@camden.gov.uk); © LB Camden, 2022

Fuel poverty

- Camden had **10,684** fuel poor households in 2020, this was significantly lower than London and England. It is the 10th least fuel poor borough in London.
- There are significant concentrations of fuel poverty in areas within **St. Pancras and Somers Town, Bloomsbury** and **King's Cross** wards, especially south of Euston Road.
- There are also pockets of slightly higher levels of fuel poor households in **Highgate, Haverstock, Kentish Town South** and **Camden Square**.



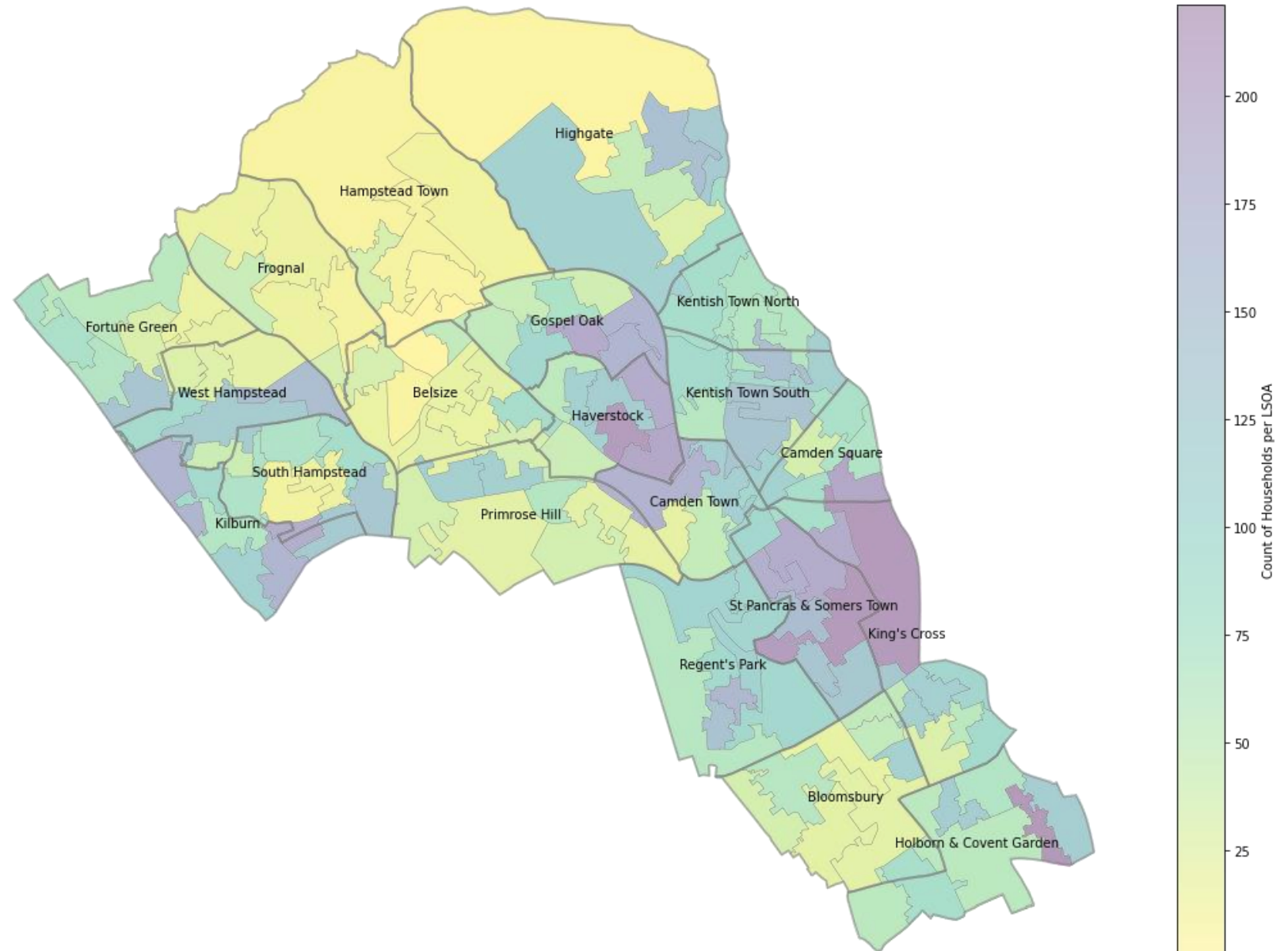
Fuel poverty

Count of households in receipt of Housing Benefit or Council Tax Support and identified as in fuel poverty on Low Income Family Tracker (LIFT)

- LIFT data shows particular concentrations of fuel poor households in **Gospel Oak, Haverstock, Camden Town, Camden Square, St. Pancras & Somers Town, King's Cross and Holborn & Covent Garden.**
- There are also pockets of slightly higher levels of fuel poor households in **the west of Camden e.g. Kilburn and West Hamstead.**

Count of households in receipt of Housing Benefits or Council Tax Support and identified as being in FUEL POVERTY by LSOA

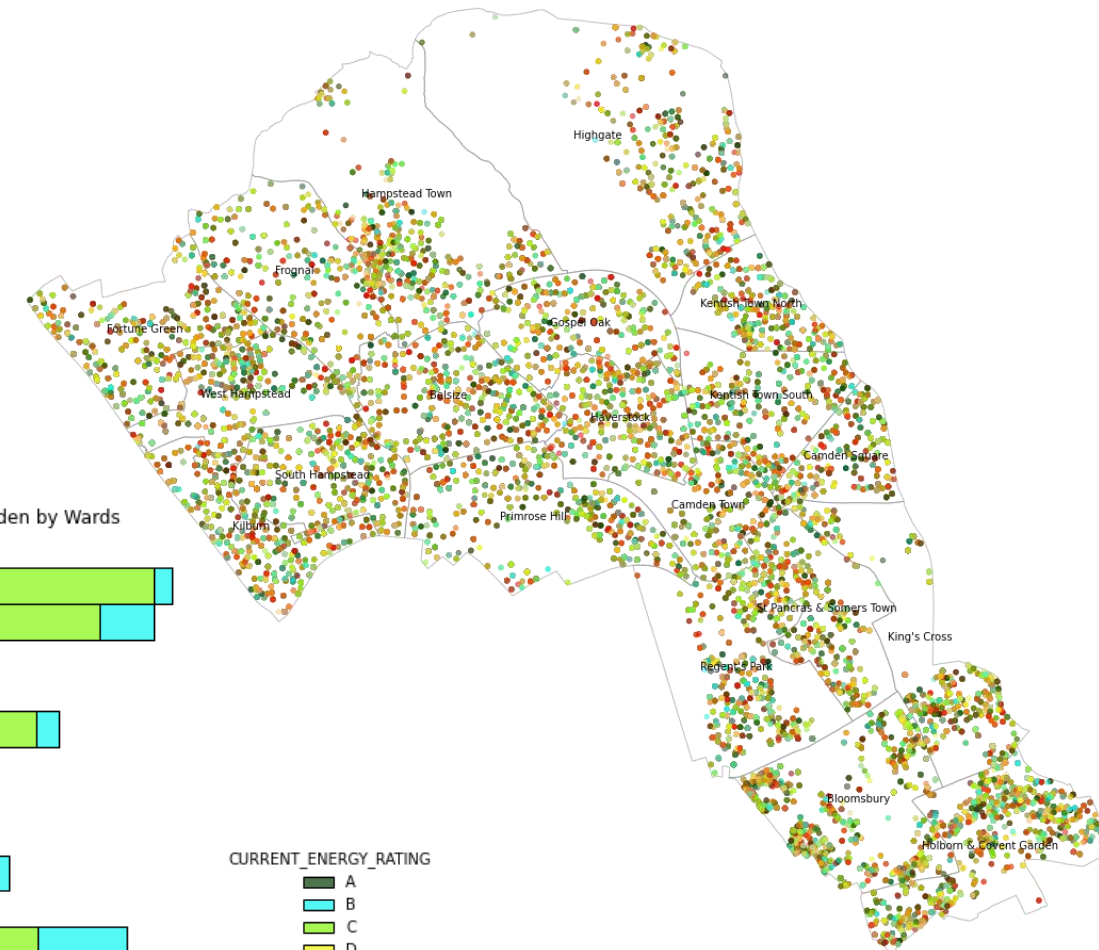
(September 2022)



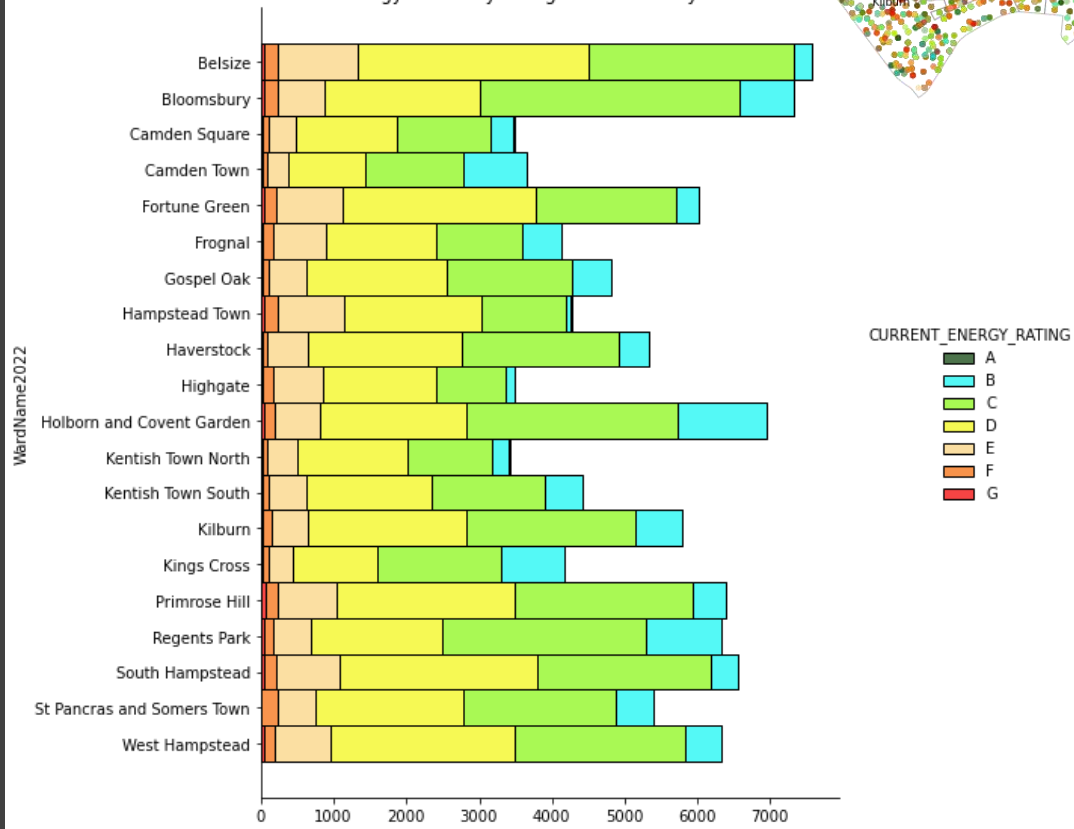
Energy efficiency

Data based on property energy efficiency certificates

Energy Ratings of the households in Camden

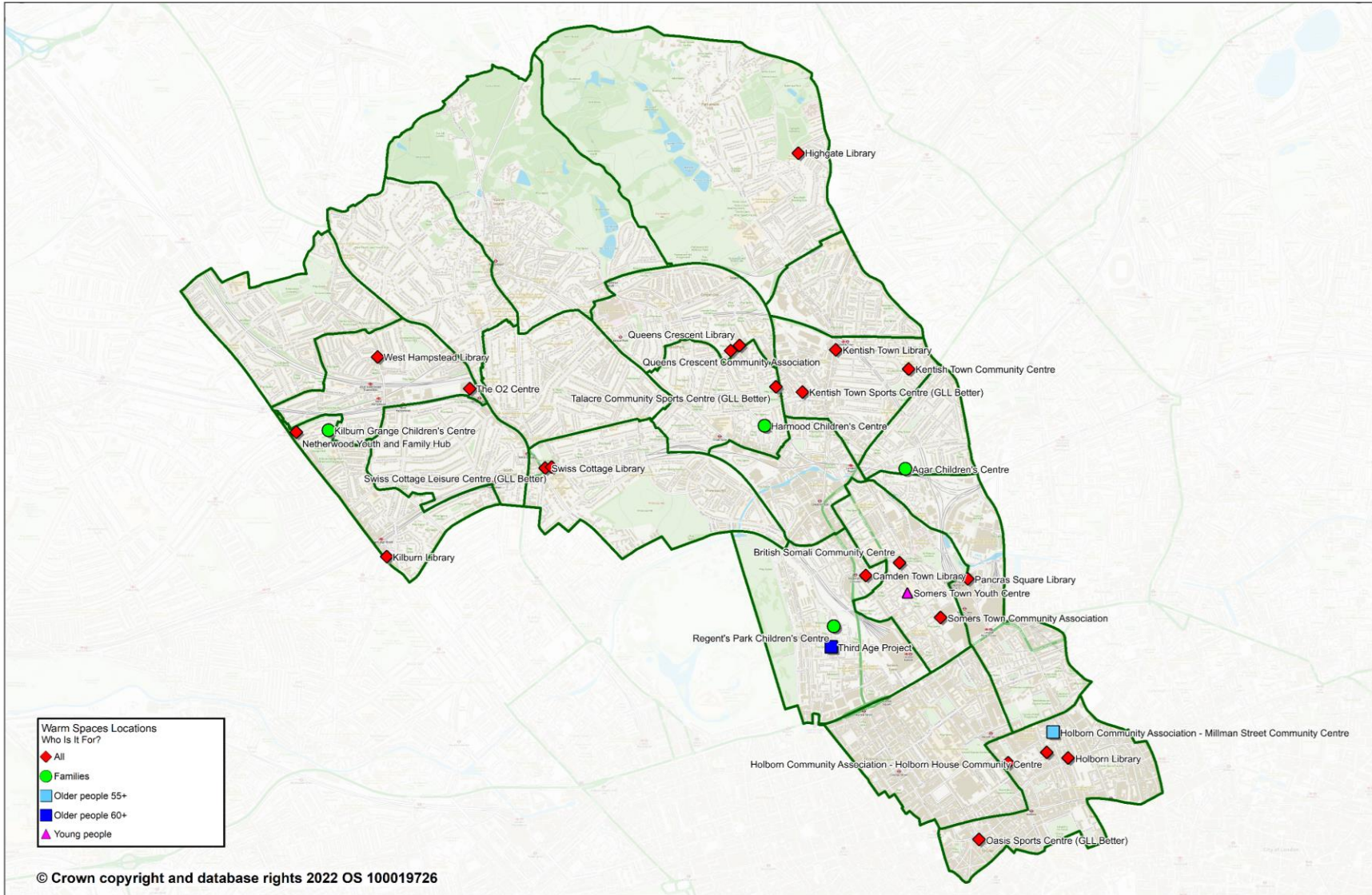


Energy Efficiency ratings in Camden by Wards



Warm spaces

Planned locations of borough warm spaces, based on analysis of available locations and need.



Warm Spaces Locations
Who Is It For?

- ◆ All
- Families
- Older people 55+
- Older people 60+
- ▲ Young people

© Crown copyright and database rights 2022 OS 100019726



Warm Spaces Map
Created On: 22/11/2022 14:11:00

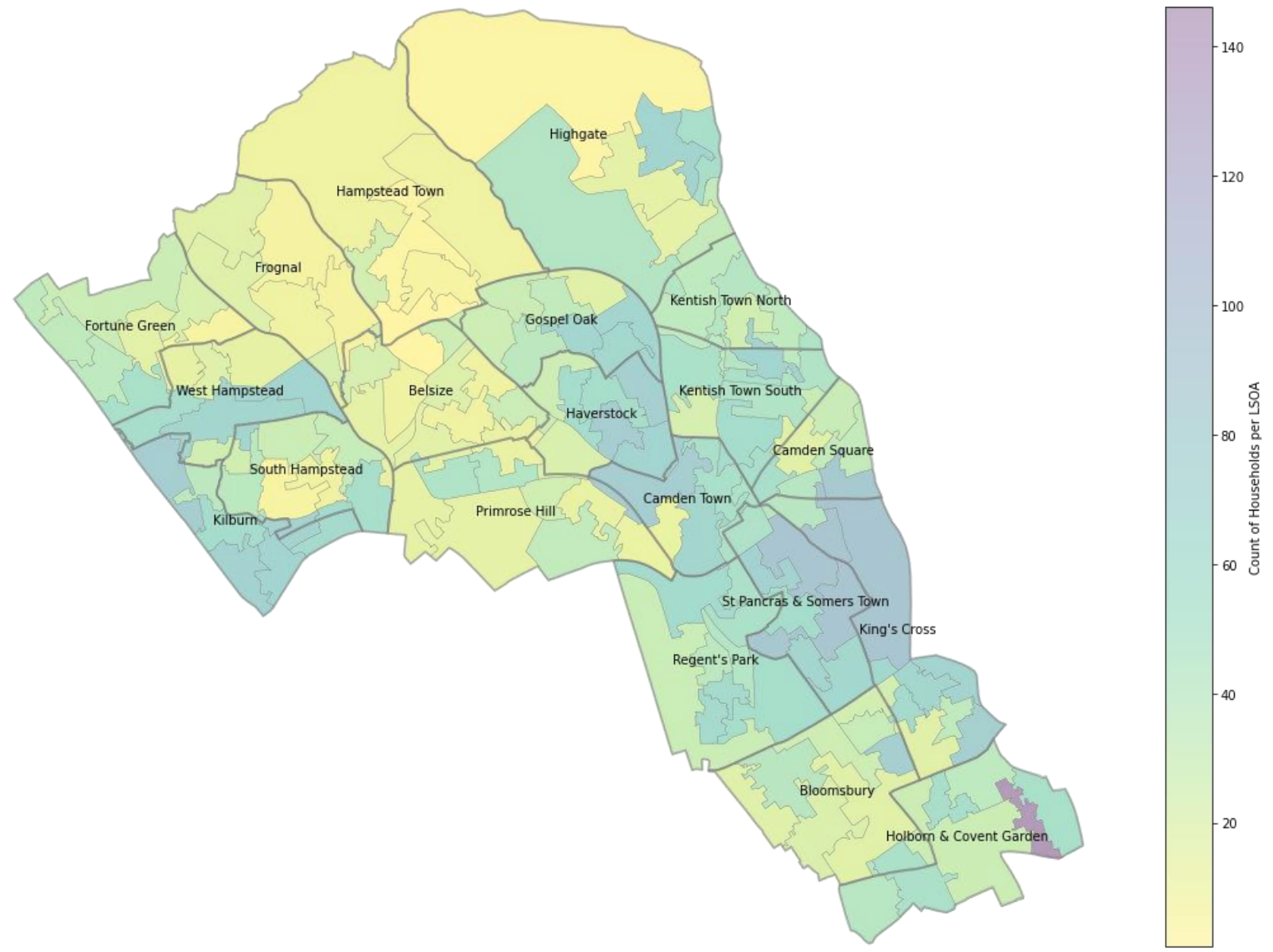


Food poverty

Households in receipt of Housing Benefits or Council Tax Support identified as being in food poverty on Low Income Family Tracker

- The highest number of households identified in a single LSOA are in **Holborn & Covent Garden**
- Higher concentrations of household food poverty are also seen in **Kilburn, Haverstock, Gospel Oak, Regent's Park, St Pancras & Somers Town, and King's Cross.**

Count of households in receipt of Housing Benefits or Council Tax Support and identified as being in FOOD POVERTY by LSOA (September 2022)

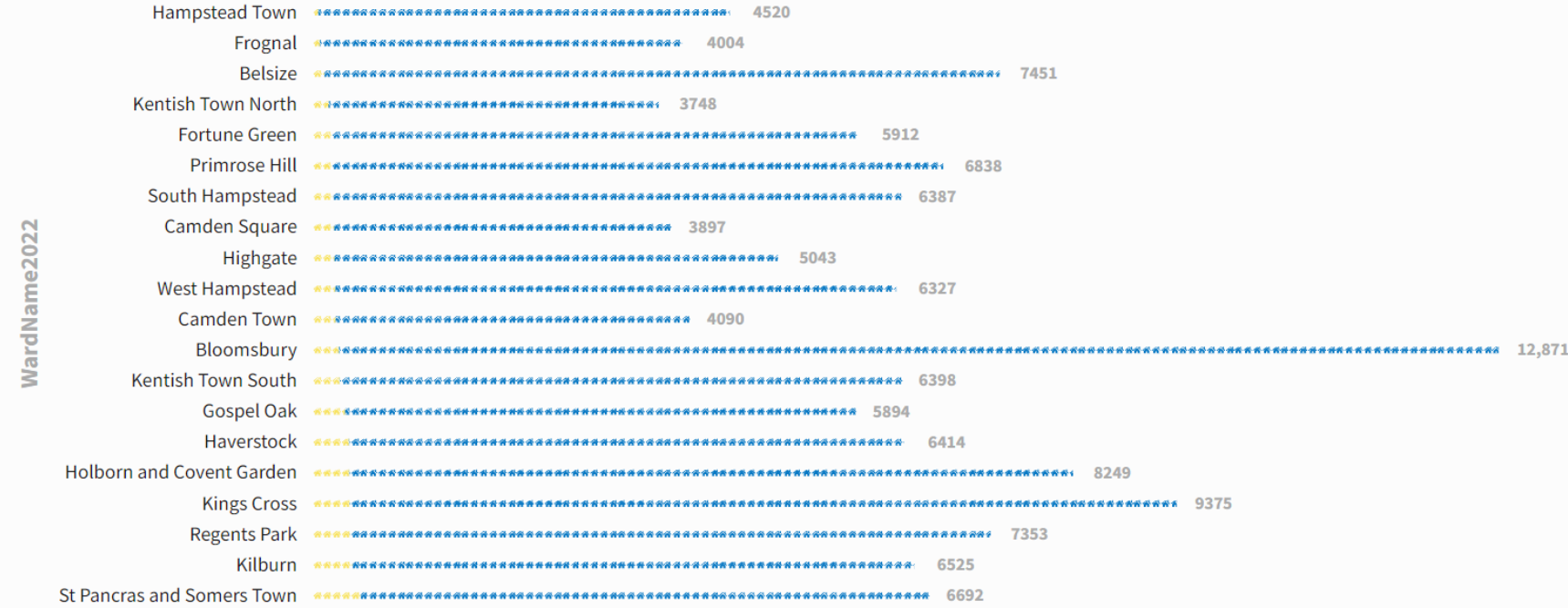


Food poverty

Households in receipt of Housing Benefits or Council Tax Support identified as being in food poverty on Low Income Family Tracker

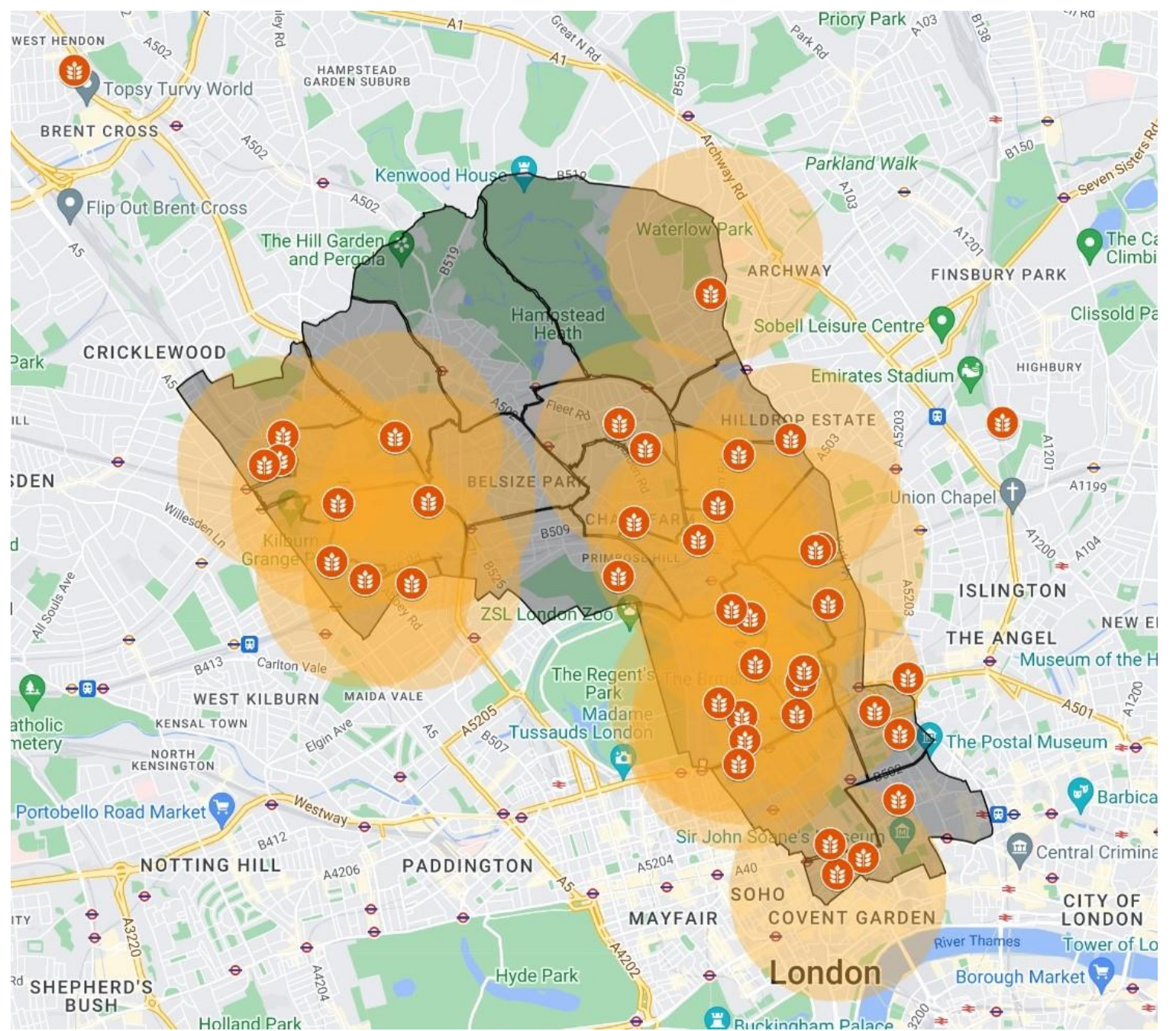
Food Poverty in Camden by Wards

🏠 = 100 🏠 Food Poverty 🏠 Non Food Poverty



Food organisations

Mapping of VCS food providers in the borough, inc. food co-ops, community centres, Trussell Trust, etc – providing either ongoing, emergency or other forms of support

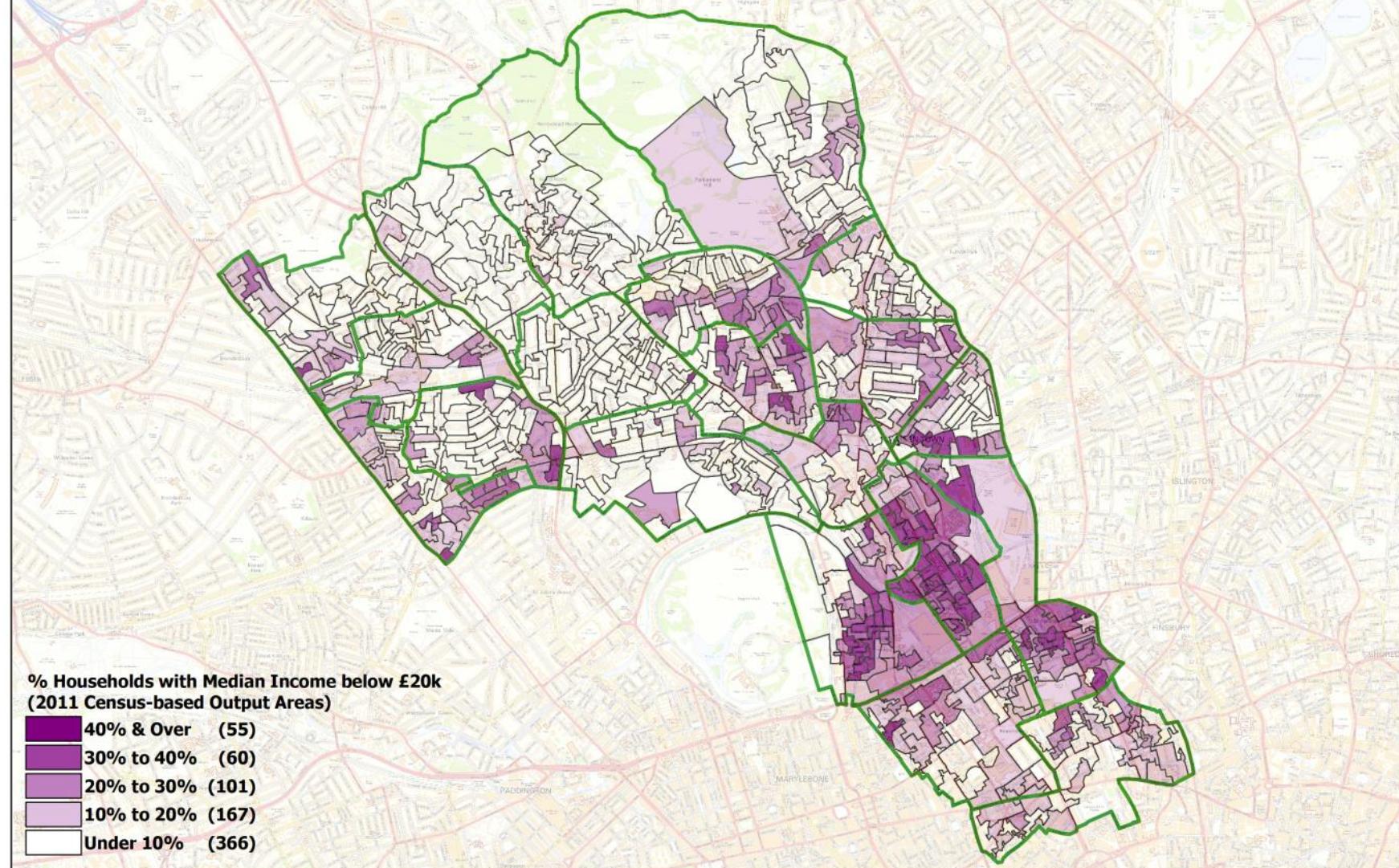


Household income

CACI Paycheck provides an estimate of household income (from all sources) for every postcode in the UK. It does not take taxes or housing costs into consideration. "Equivalentising" reflects the notion that, for example, a household of five will need a higher income than a single person living alone to enjoy a comparable standard of living. CACI calculate an 'equivalence value' for households, based on the number and age of household members.

- The highest concentration of households with equivalised incomes below £20k are found in **St Pancras and Somers Town, Regent's Park and King's Cross** wards.

Equivalised Household Income 2022: % of Households Below £20,000



Data source: Paycheck 2022, © CACI Ltd, 2022.
Borough and Ward boundaries and StreetView are based upon Ordnance Survey material and are reproduced with the permission of Ordnance Survey on behalf of the Controller of HMSO ©.
Unauthorised reproduction infringes Crown copyright and may lead to prosecution or civil proceedings. Licence No. 100019726. Year: 2022; OA Boundaries, © ONS Crown Copyright;
Produced by: Strategy Family, LB Camden (contact 020 7974 5561 or email: population@camden.gov.uk). © LB Camden, 2022.



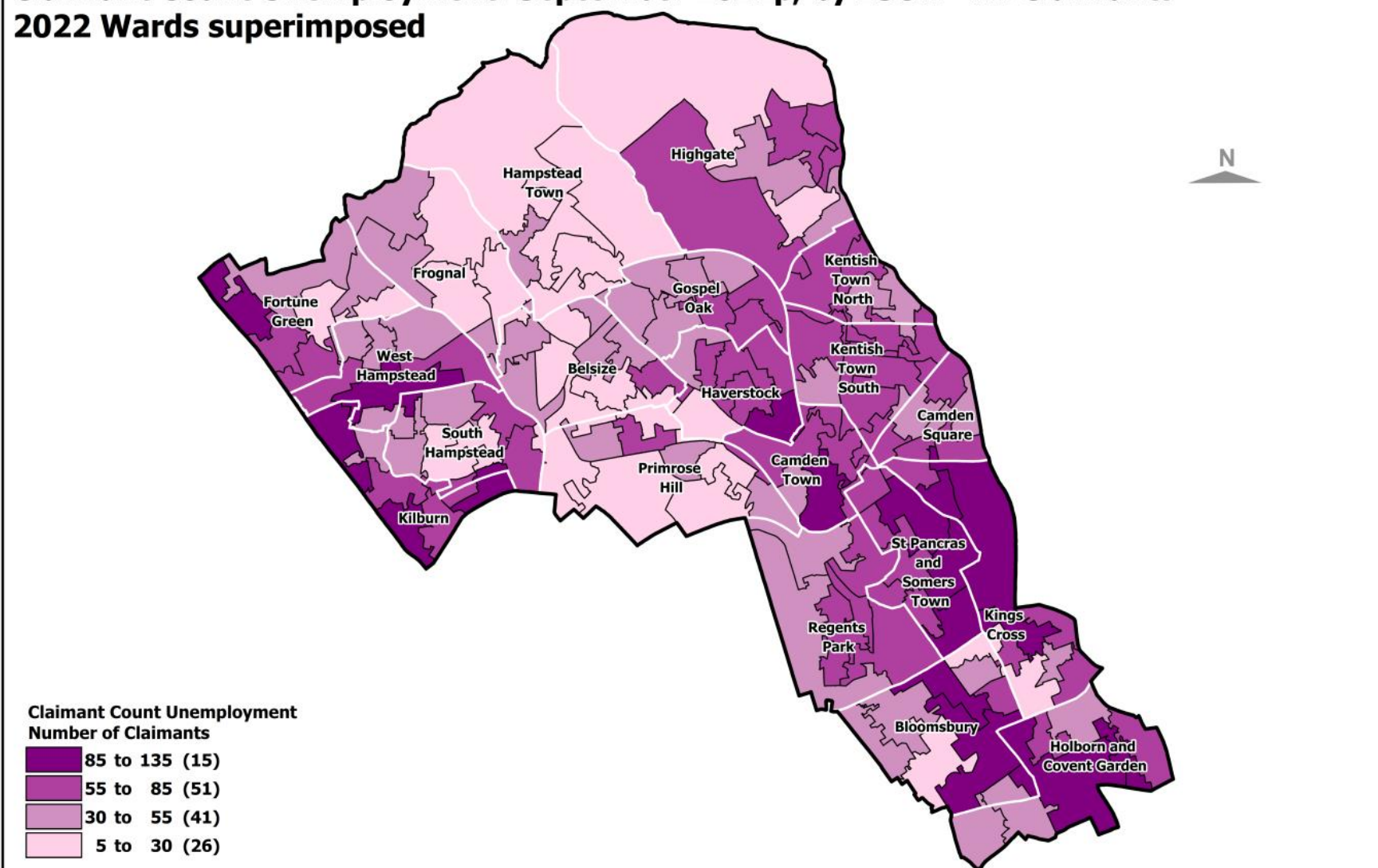
Unemployment

Data from Department for Work and Pensions (DWP) showing the number of people claiming unemployment benefits while looking for work

The areas with the highest concentrations of individuals claiming unemployment benefits are found in the south-east and north-west of Camden:

- ❑ Fortune Green
- ❑ West Hampstead
- ❑ Kilburn
- ❑ St Pancras & Somers Town
- ❑ Bloomsbury
- ❑ King's Cross
- ❑ Holborn and Covent Garden

Claimant Count Unemployment: September 2022p, by LSOA - All Claimants
2022 Wards superimposed

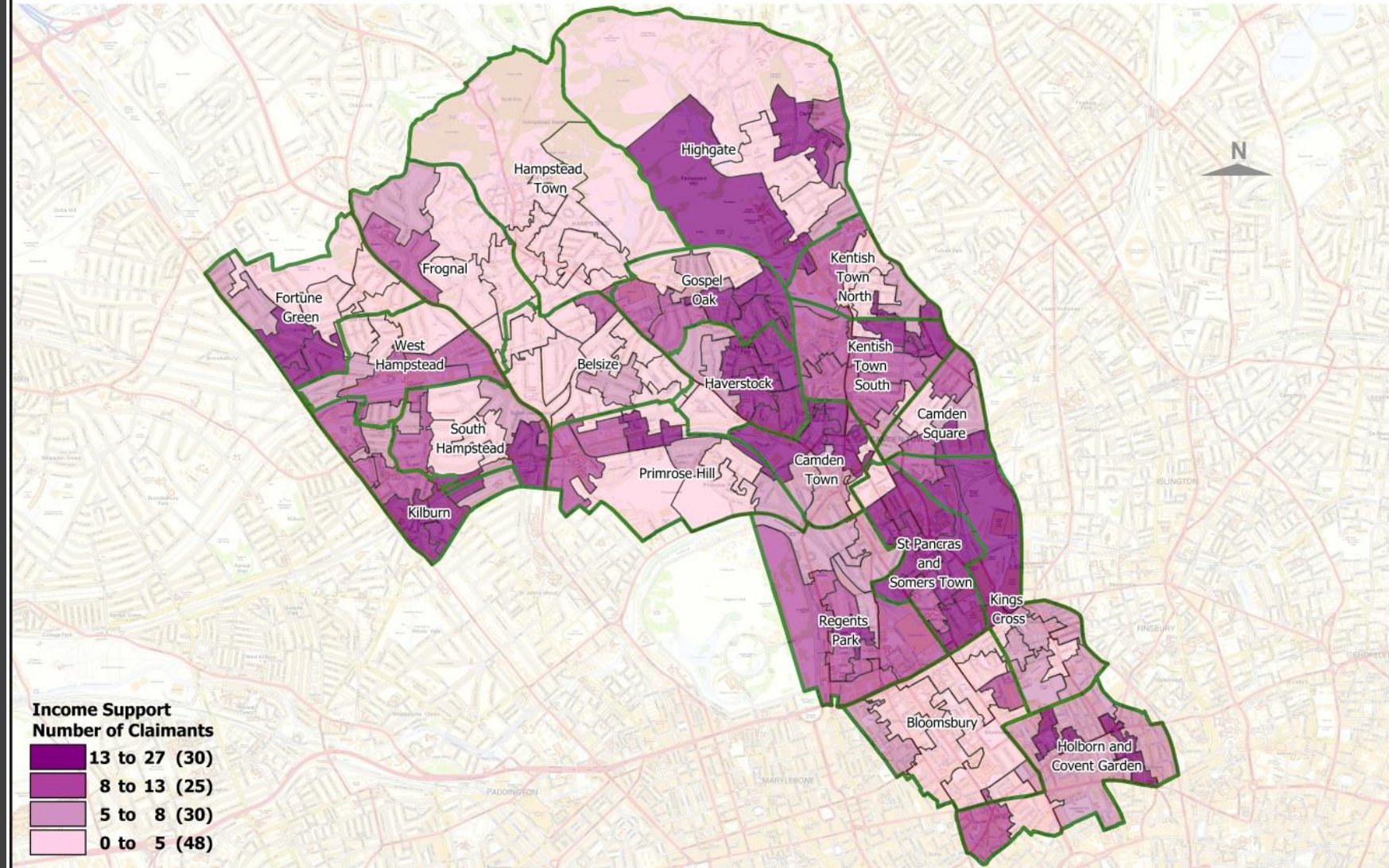


Data source: DWP Claimant Count (Interim measure) by Lower-layer Super Output Areas (LSOAs), © ONS, 2022. p=provisional r=revised
LSOA Boundaries, © ONS Crown Copyright; Borough and 2022 Ward boundaries and StreetView are based upon Ordnance Survey material and are reproduced with the permission of Ordnance Survey on behalf of the Controller of HMSO ©. Unauthorised reproduction infringes Crown copyright and may lead to prosecution or civil proceedings. Licence No. 100019726. Year: 2022.
Produced by: Strategy Family, LB Camden (contact 020 7974 5561 or email: population@camden.gov.uk). © LB Camden, 2022.

Income support

Data from Department for Work and Pensions (DWP) showing the number of people receiving income support.

DWP Benefits: Income Support, February 2022 by LSOA



Data source: DWP Benefits data, © DWP/ONS, 2022.

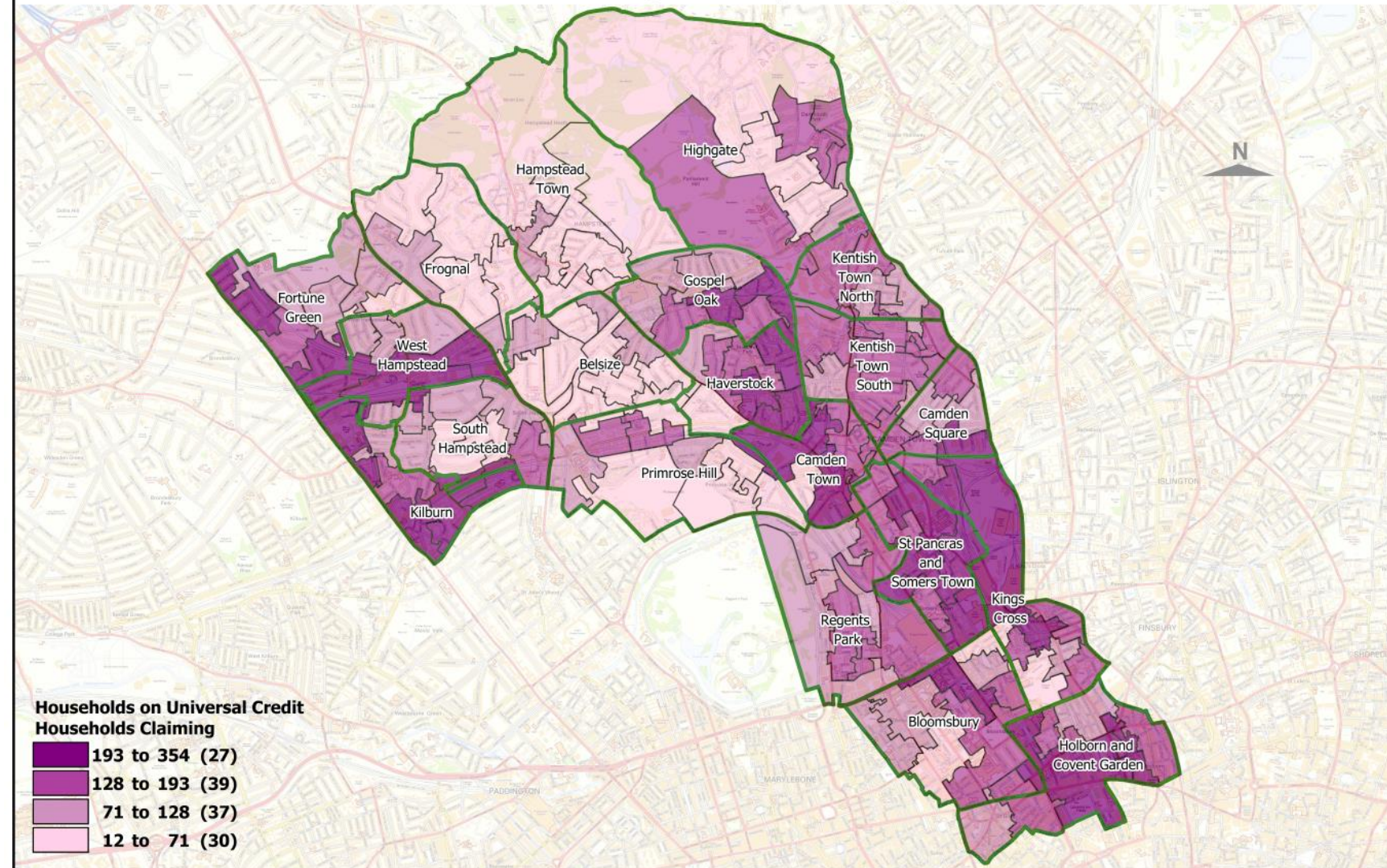
Boundaries: This map is based upon Ordnance Survey material with the permission of Ordnance Survey on behalf of the Controller of Her Majesty's Stationery Office ©. Unauthorised reproduction infringes Crown copyright and may lead to prosecution or civil proceedings. Licence No. 100019726. Year: 2022; 2011 Census Statistical Boundaries, © ONS, Crown Copyright.

Produced by: Strategy Family, LB Camden (contact 020 7974 5561 or email: population@camden.gov.uk); © LB Camden, 2022

Universal Credit

Data from Department for Work and Pensions (DWP) showing the number of people receiving Universal Credit payments.

DWP Benefits: Households on Universal Credit, February 2022 by LSOA



Data source: DWP Benefits data, © DWP/ONS, 2022.

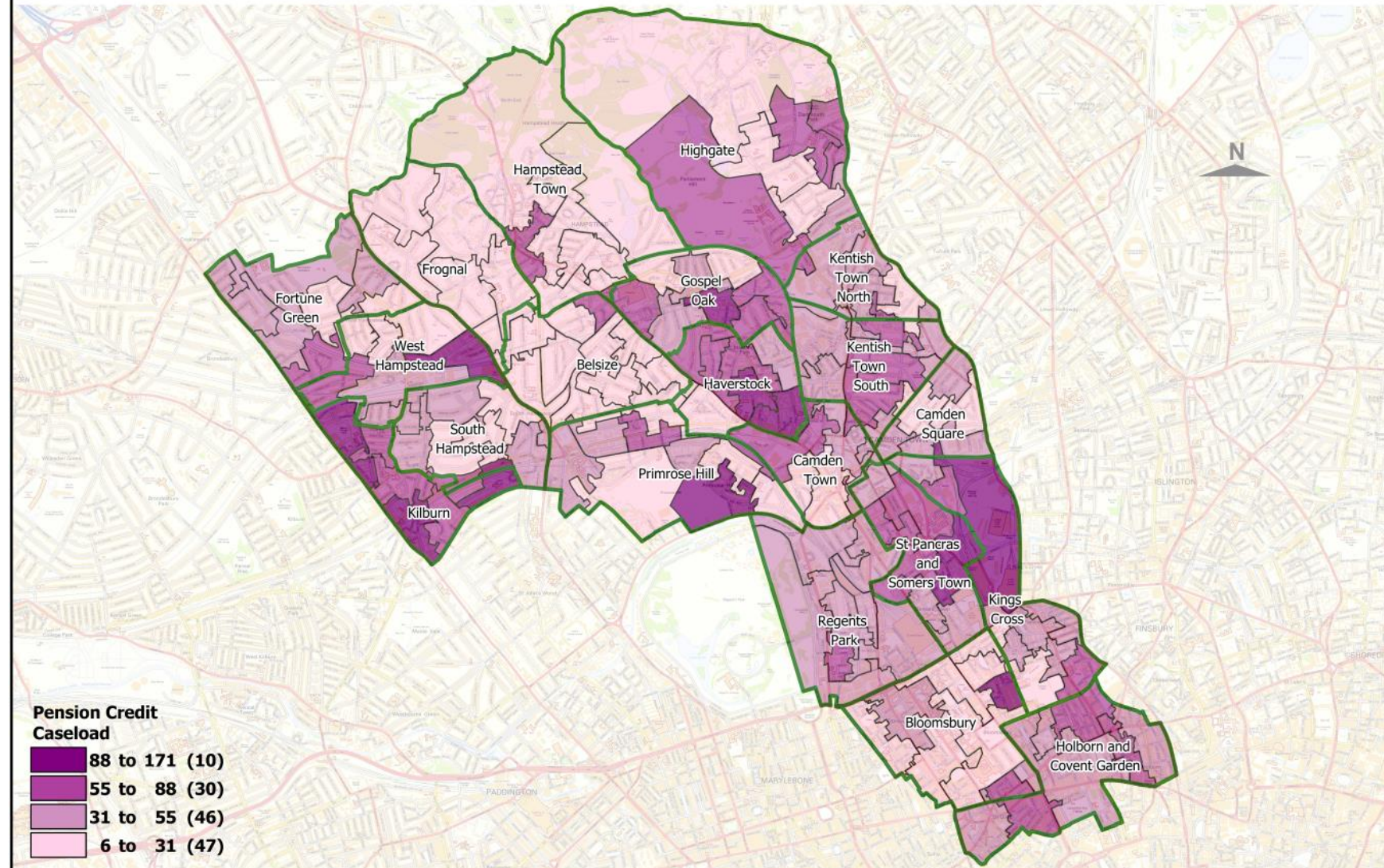
Boundaries: This map is based upon Ordnance Survey material with the permission of Ordnance Survey on behalf of the Controller of Her Majesty's Stationery Office ©. Unauthorised reproduction infringes Crown copyright and may lead to prosecution or civil proceedings. Licence No. 100019726. Year: 2022; 2011 Census Statistical Boundaries, © ONS, Crown Copyright.

Produced by: Strategy Family, LB Camden (contact 020 7974 5561 or email: population@camden.gov.uk); © LB Camden, 2022

Pension credit

Data from Department for Work and Pensions (DWP) showing the number of people receiving pension credit.

DWP Benefits: Pension Credit, February 2022 by LSOA



Data source: DWP Benefits data, © DWP/ONS, 2022.

Boundaries: This map is based upon Ordnance Survey material with the permission of Ordnance Survey on behalf of the Controller of Her Majesty's Stationery Office ©. Unauthorised reproduction infringes Crown copyright and may lead to prosecution or civil proceedings. Licence No. 100019726. Year: 2022; 2011 Census Statistical Boundaries, © ONS, Crown Copyright.

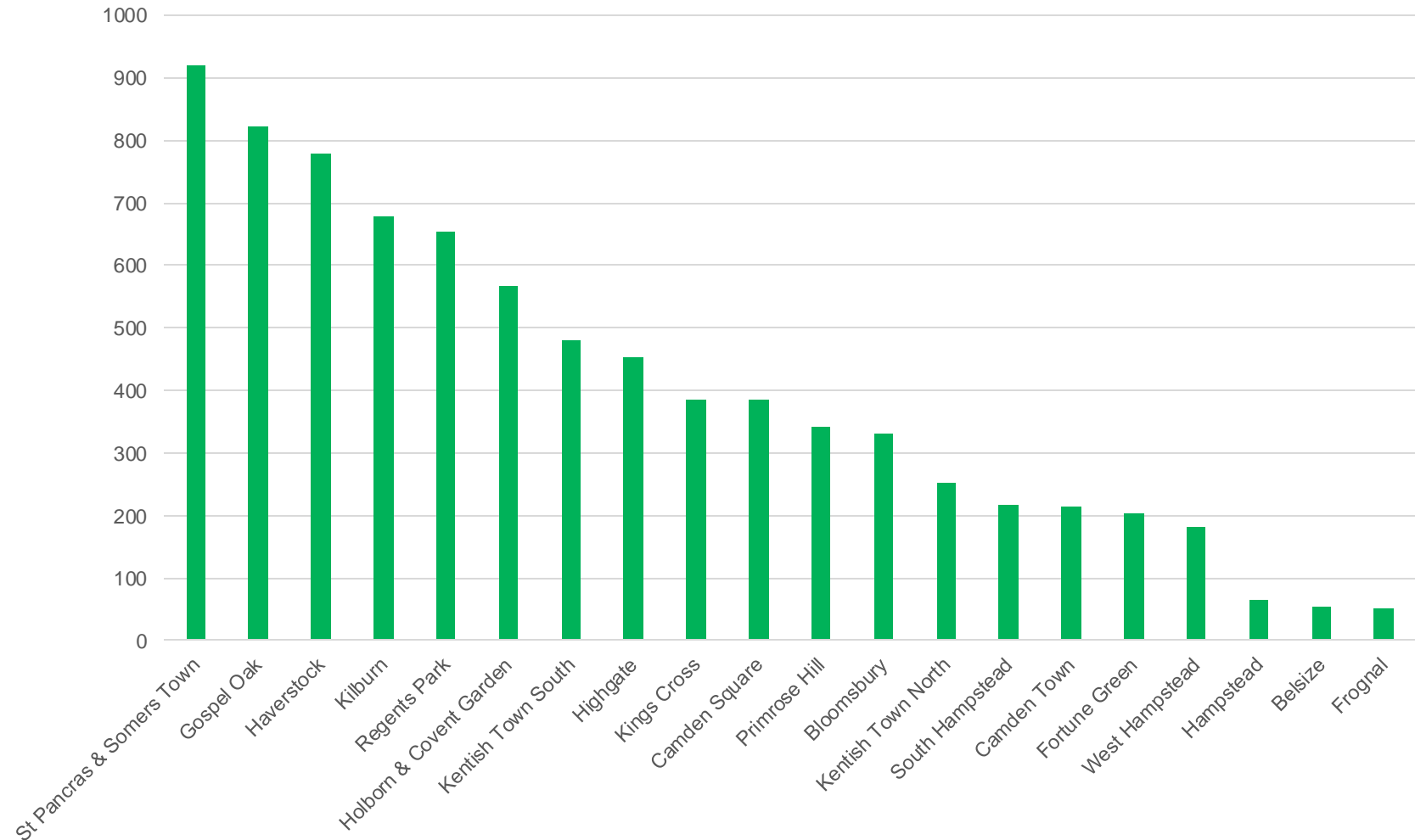
Produced by: Strategy Family, LB Camden (contact 020 7974 5561 or email: population@camden.gov.uk); © LB Camden, 2022

Rent arrears

Latest data on council tenant rent arrears numbers by ward, for arrears over £100.

- This is another potential indicator of financial hardship.
- The highest level of rent arrears are in **St. Pancras and Somers Town, Gospel Oak and Haverstock**.
- (n.b. number of households in rent arrears is affected by location of council properties).

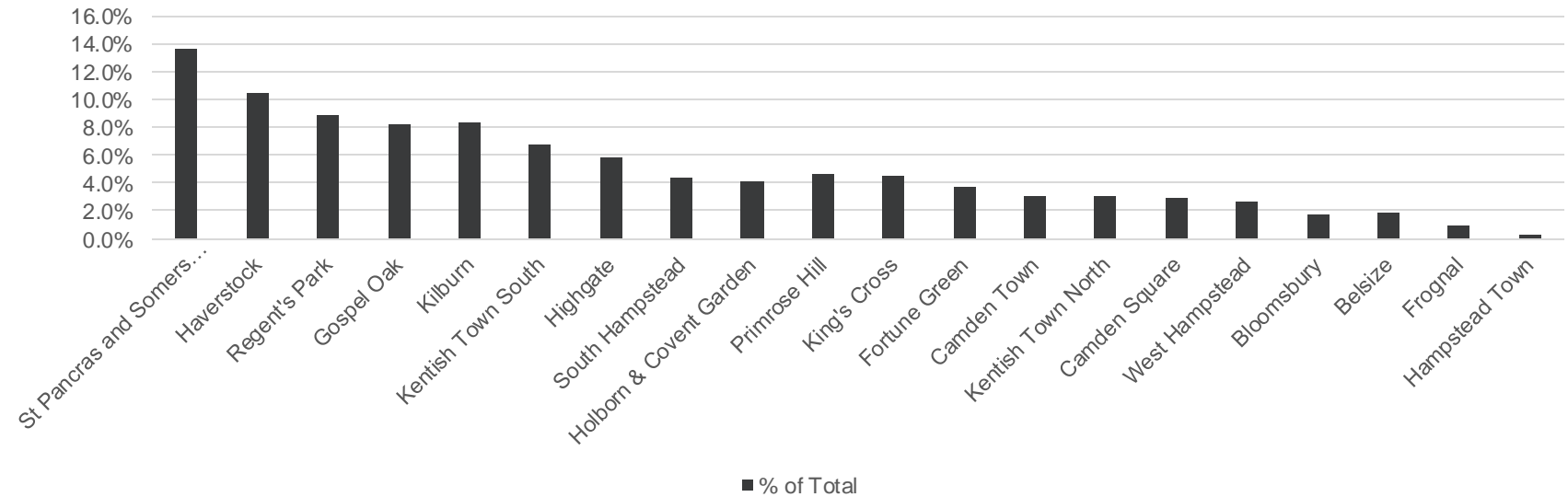
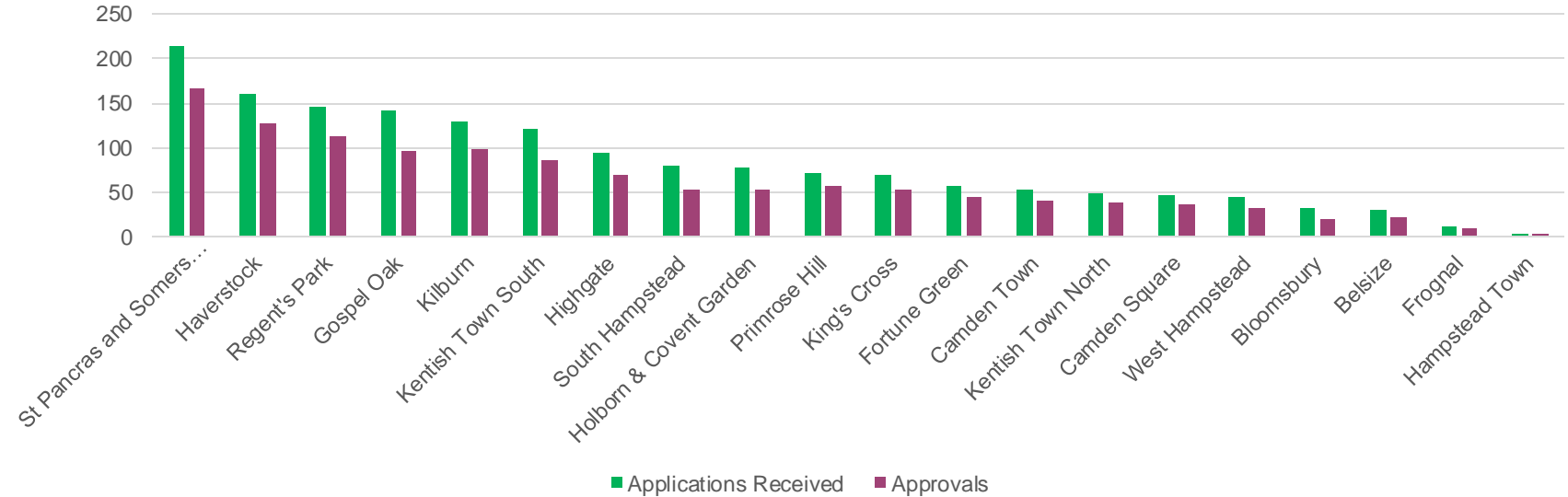
Number of households in rent arrears over £100



Cost of living crisis payments

Data on council payments from the cost of living crisis fund to households applying for support.

- The highest level of applications and % of fund awarded have been in **St Pancras and Somers Town, Kilburn, Regent's Park, Haverstock and Gospel Oak.**



Explanations of terms, definitions and sources

Statistical geographies. There are 3 sets of census-based geography that are directly derived from census data:

- **Output Areas (OAs)** are the smallest unit, based on unit postcodes. They have a target usual resident population of between 100-625 and between 40-250 households.
- **Lower-layer Super Output Areas (LSOAs)** are comprised of OAs, with a population threshold of 1,000-3,000 and a household threshold of 400-1,200.
- **Middle-layer Super Output Areas (MSOAs)** are comprised of LSOAs, with a population threshold of 5,000-15,000 and a household threshold of 2,000-6,000.
- All 3 tiers nest exactly within the next tier up and all statistical areas nest within the local authority boundary.
- In 2001 and 2011, LSOAs nested within the Camden 2002 ward structure (18 wards), but with the change to 2022 wards (20 wards) there is no relationship to wards.

LIFT – Low Income Family Tracker – Policy in Practice data tool that combines Camden data (e.g. housing benefit and council tax information) with analytical model to understand financial resilience of families in borough.

FSM – Free School Meals – [link](#) to Camden guidance on criteria.