

# CAMDEN AND ISLINGTON ESOL ADVICE SERVICE ESOL ACTIVITIES

Monday 22 March 2021

Your Census 2021 form needs to be completed as soon as possible.  
Click here or call 0800 587 2021 for help in your language.

## Social Media

### Pre-entry to Entry 1

#### Computer Words



For Pre-Entry to Entry 1 Learners

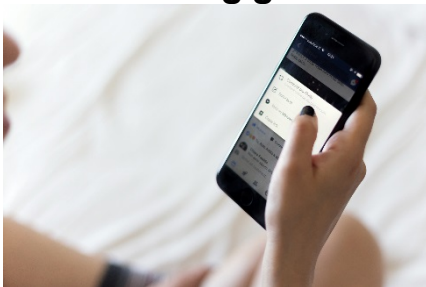
#### Technology Words



For Pre-Entry to Entry 1 Learners

### Entry 1 to Entry 2

#### Text messaging Matching game



For Entry 1 to Entry 2 Learners

#### Social Media Posts Writing



For Entry 1 to Entry 2 Learners

CAMDEN  
020 7974 1618  
[esol@camden.gov.uk](mailto:esol@camden.gov.uk)  
[www.camden.gov.uk/esol](http://www.camden.gov.uk/esol)



ISLINGTON  
020 7974 1930  
[esol@islington.gov.uk](mailto:esol@islington.gov.uk)  
[www.islington.gov.uk/esol](http://www.islington.gov.uk/esol)

# CAMDEN AND ISLINGTON ESOL ADVICE SERVICE

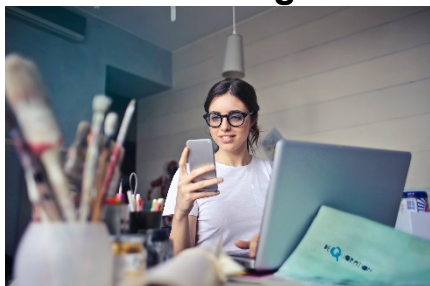
## ESOL ACTIVITIES

Monday 22 March 2021

### Entry 2 to Entry 3

#### Future of Social Media

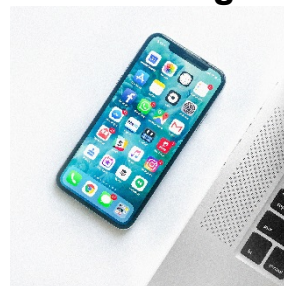
Listening



For Entry 2 to Entry 3 Learners

#### Using Social Media

Listening



For Entry 2 to Entry 3 Learners

### Entry 3 to Level 1

#### Anti-social Networking

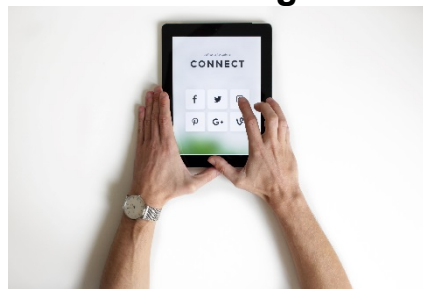
Reading



For Entry 3 to Level 1 Learners

#### Posting on Social Media

Listening



For Entry 3 to Level 1 Learners

CAMDEN  
020 7974 1618  
[esol@camden.gov.uk](mailto:esol@camden.gov.uk)  
[www.camden.gov.uk/esol](http://www.camden.gov.uk/esol)



ISLINGTON  
020 7974 1930  
[esol@islington.gov.uk](mailto:esol@islington.gov.uk)  
[www.islington.gov.uk/esol](http://www.islington.gov.uk/esol)



Supported by  
 ISLINGTON

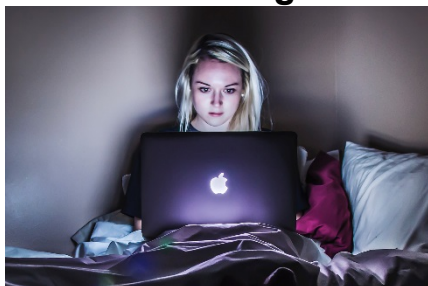
# CAMDEN AND ISLINGTON ESOL ADVICE SERVICE ESOL ACTIVITIES

Monday 22 March 2021

## Level 1 to Level 2

### Online Safety

Listening



For Level 1 to Level 2 Learners

### Time spent online

Reading



For Level 1 to Level 2 Learners

## Useful links

### Health

**NHS Coronavirus Test and Trace:** Call 119 to get a Coronavirus test.

**Coronavirus information in your language**

**Covid-19 vaccination information in your language**

**GP appointments and bookings**

**Free Emergency Dentist:** Arrive at 6:30am, no appointment needed

### Help and information

**Census 2021**

**Help with Census 2021 in your language** - Free language helpline: 0800 587 2021

**Camden Digital Library:** Free eBooks and eAudio

**Islington Borrow Box:** Free eBooks and eAudio

**Citizens Advice - Housing**

**Who can apply for social housing?**

**Find your local council:** Get help and information

**Free Legal Help:** For families with Children

**Barnet Refugee Service:** For Asylum Seekers and Refugees

**London Asylum Crisis Project:** For Asylum Seekers and Refugees

**Go to the next page for links to public services in Camden and Islington**

CAMDEN  
020 7974 1618  
[esol@camden.gov.uk](mailto:esol@camden.gov.uk)  
[www.camden.gov.uk/esol](http://www.camden.gov.uk/esol)



ISLINGTON  
020 7974 1930  
[esol@islington.gov.uk](mailto:esol@islington.gov.uk)  
[www.islington.gov.uk/esol](http://www.islington.gov.uk/esol)



Supported by  
 ISLINGTON

# CAMDEN AND ISLINGTON ESOL ADVICE SERVICE

## ESOL ACTIVITIES

Monday 22 March 2021

### CAMDEN

#### Camden Council

- **Benefits and support**
- **Children, Families and Young People**
- **Education**
- **Crime and Safety**
- **Housing**
- **Coronavirus**

#### Camden libraries

#### Camden Early Help

#### Camden Employment Support

#### Citizens Advice

#### Using a food bank

**Independent food banks: Urban Community Projects / The Pantry / Queens Crescent**

---

### ISLINGTON

#### Islington - Advice

- **Free, independent advice on debt, benefits and housing**
- **Get help to manage your money**
- **Finding a home / Homelessness**
- **Resident support scheme**
- **Assistance for refugees and migrants**
- **Consumer advice – Protect yourself against scams**

#### Islington libraries

#### Islington Family Information Service

#### Islington Employment Support (iWork)

#### Help on your doorstep

#### Citizens Advice

#### Using a food bank

**Independent food banks: Ringcross Community / The Arc Centre / The Hive Foodbank**

CAMDEN

020 7974 1618

[esol@camden.gov.uk](mailto:esol@camden.gov.uk)

[www.camden.gov.uk/esol](http://www.camden.gov.uk/esol)



ISLINGTON

020 7974 1930

[esol@islington.gov.uk](mailto:esol@islington.gov.uk)

[www.islington.gov.uk/esol](http://www.islington.gov.uk/esol)

Supported by

